



Morphological characteristics of aluminium foams produced by replication casting

A. Boschetto, L. Bottini, F. Campana, L. Consorti

Dip. di Ingegneria Meccanica e Aerospaziale, Sapienza Università di Roma, Roma (Italy)

alberto.boschetto@uniroma1.it, francesca.campana@uniroma1.it

D. Pilone

Dip. Ingegneria Chimica Materiali Ambiente, Sapienza Università di Roma, Roma (Italy)

daniela.pilone@uniroma1.it

ABSTRACT. Foams and porous materials with cellular structure have many interesting combinations of physical and mechanical properties coupled with low specific weight. By means of replication casting it is possible to manufacture foams from molten metal without direct foaming. A soluble salt is used as space holder, which is removed by leaching in water. This can be done successfully if the content of space holding fillers is so high that all the granules are interconnected. One of the main advantages of using the replication casting is a close control of the pore sizes which is given by the distribution of particle sizes of the filler material. This contrasts with the pore size distribution of the materials foamed by other processes where a wider statistical distribution of pores is found. On the other hand, the maximum porosities that can be achieved using space holders are limited to values below 60%, whereas the other methods allow for porosities up to 98%. Temperature of the mould and infiltration pressure are critical process parameters: a typical problem encountered is the premature solidification of the melt, especially due to the high heat capacity of the salt.

In this work foam properties such as cell shape, distribution and anisotropy and defect presence are investigated by using digital image processing technique. For this purpose replicated AlSi7Mg0.3 alloy foams are produced by infiltrating preforms of NaCl particles, varying the metal infiltration pressure and the mould preheating temperature.

An original procedure based on image analysis has been set up to determine size, morphology and distribution of cells. The paper demonstrates that this methodology, coupled with microstructural analysis is a useful tool for investigating the effects of process parameters on foam properties.

SOMMARIO. Le schiume ed i materiali cellulari presentano una interessante combinazione di proprietà fisiche e meccaniche oltre a un basso peso specifico. Mediante il metodo per infiltrazione è possibile produrre direttamente la schiuma senza schiumatura diretta. Come materiale interstiziale è utilizzato un sale solubile che viene poi rimosso mediante lisciviazione con acqua. Ciò può essere fatto facilmente se il contenuto di sale è tale che i granuli sono a contatto tra loro e dunque la porosità risultante è interconnessa. Uno dei principali vantaggi legati all'utilizzo del metodo per infiltrazione è la possibilità di controllare la distribuzione della dimensione delle celle che è strettamente correlata con la distribuzione delle dimensioni delle particelle di sale. D'altra parte però l'utilizzo di un materiale interstiziale non consente di ottenere una percentuale di vuoto superiore al 60%, mentre altri metodi consentono di raggiungere valori del 98%. Nella produzione delle schiume per infiltrazione pressione e temperatura dello stampo sono i parametri critici di processo: uno dei principali problemi legati all'utilizzo di questa metodologia è la solidificazione prematura del fuso dovuta soprattutto all'elevata capacità termica del sale.

In questo lavoro si esaminano schiume in lega AlSi7Mg0.3 ottenute mediante infiltrazione in preforme costituite da particelle di NaCl variando pressione di infiltrazione e temperatura dello stampo. Mediante l'utilizzo di una procedura originale basata sull'analisi di immagine si sono analizzate proprietà delle schiume

quali forma, distribuzione e anisotropia delle celle, nonché la presenza di eventuali difetti. Tale metodologia, affiancata dall'analisi microstrutturale, si dimostra essere un efficace mezzo per correlare le proprietà delle schiume con i parametri di processo.

KEYWORDS. Aluminium foams; Foam morphology; Image analysis; Replication casting.

INTRODUCTION

Metal foams are a class of materials with interesting physical, mechanical, thermal, electrical, structural and acoustic properties. The current understanding of production methods ranges from ancient to novel processing techniques, many of which still under development. The processes can be divided into several classes: melt gas injection, gas-releasing particle decomposition in the melt or in semi-solids, casting using a polymer or wax precursor as template, metal decomposition on cellular preforms, entrapped gas expansion, metal infiltration through a leachable pattern[1].

This last technique is characterized by the following steps: a bed of particles of a leachable material is infiltrated by liquid metal under pressure and allowed to cool [2], afterwards leaching of the particles gives a cellular metallic structure of great uniformity. Although salt grains offer the advantage that they can be sintered to enhance the connectivity of the salt and change the structure of the pattern, the obtainable density depends on the packing efficiency of the granules, which is related to their size distribution. This process was pioneered by Polonsky et al. [3] that produced aluminium alloy foams.

Only in the recent 15 years the production of high-purity foams by replication has been revived [4]. Adair et al. [5] studied the crystal shape and the growth of salt crystals to obtain several structures. In Gaillard et al. [6] the authors set up a procedure to fabricate NaCl powders by controlling their shape. Foams with spherical cells have been produced by Jiang et al. [7]. Goodall et al. [8, 9] varied the foam relative density by densifying the NaCl preform before infiltration. The results showed that cold pressing rather than sintering yields superior foam modulus.

Despois et al. [10] investigated the effect of infiltration pressure on mechanical properties and permeability of foams. They found that as the pressure is increased, small finger-like protrusions appear lowering the foam permeability to fluid flow. On the other hand mechanical properties such as Young's modulus and yield stress increase with increasing relative density. Kadar et al. [11] studied the compression behaviour of foams manufactured by replication casting of an eutectic Al-Si alloy. The acoustic emission has been employed to study that behaviour.

Quadrini et al. [12] observed different microstructures along the height of the samples: the grain size decreases from the top, near to the cooled piston, to the bottom of the foam. This behaviour can be related to the cooling rate and pressure during solidification[13]. It is noteworthy that the grain size distribution is everywhere fine if compared with the bulk sample: this is due not only to the holding pressure but also to the salt precursor. Thus good mechanical properties are expected and a further increase could be obtained after heat treatment. Porosity of the foam has been measured by Boschetto et al. [14] by means of digital image processing. The morphological analysis of the foam showed sharpened voids, especially in comparison with the ones obtained by compact powder processes. This is justified by the salt pattern that determines the formation of angular and faceted cells.

At present metal foams have a very wide range of applications due to their properties [15]. Examples are: lightweight structures due to excellent stiffness-to-weight ratio [16]; heat exchangers and refrigerators due to their high specific surface area [17]; energy absorbers for the ability to absorb energy at constant pressure [18, 19]; acoustic absorbers for their sound absorbing capacity [19]; sandwich cores due to low density and fracture strength; flame arrester panels for their conductivity; filters for gas and liquid filtration; catalyst carriers for their good conductivity and high specific surface area; shock wave dissipation devices due to dumping capacity; air batteries.

Considering that each application requires specific foam properties, knowing the relationship between manufacturing process parameters and foam properties is of paramount importance to tailor properties for a given application. For that reason in this work an original procedure based on image analysis has been set up to determine size, morphology and distribution of cells. This methodology, coupled with microstructural analysis, is a useful tool for investigating the effects of process parameters on foam properties.

In order to demonstrate capabilities of the proposed method, in this paper the results related to twelve AlSi7Mg0.3 alloy specimens obtained by using different process parameters are discussed. First the experimental set up to produce the foams is described together with the proposed specimen analysis method, then results and discussion are reported and finally the conclusions are drawn.



EXPERIMENTAL

Specimens' fabrication

The alloy used for producing foams is AlSi7Mg0.3 (A356.0). This alloy is commonly used in pressure and gravity casting for fabricating electric motors, automotive e structural components. The pattern was made of commercial NaCl that allows to set up a quite cheap industrial process. The mould was composed by a cylindrical core, a positioning base and an upper conveyor as reported in Fig. 1. The resulting specimen is 28 mm in diameter and 50 mm in height. A hollow oven allowed to keep constant the temperature of the model by a thermostatic controller. A hydraulic cylinder was employed to provide the pressure for the infiltration and solidification stage. The assembled apparatus is reported in Fig. 2. Pressure, piston speed, mould and crucible temperatures were acquired by an A/D input device system and controlled through Labview.

The specimens' manufacturing process includes several steps. First a sample (40 g) was taken from an aluminium ingot. The alloy was put in a graphite crucible heated in a muffle at 700 °C. The salt (9 g) was sieved by means of a 3 mm mesh sieve in order to eliminate all the smaller particles, placed in a second crucible and heated at 700 °C. The hollow oven was used to keep constant the mould temperature. Then the salt was poured into the mould and subsequently the aluminium alloy was cast. The piston was pushed at a speed of 32 mm/s to close the mould and provide the predefined pressure to infiltrate the pattern. The pressure was maintained for 30 s. After solidification and cooling the specimen was extracted by opening the mould. Then the salt was dissolved in water. By means of this process 12 specimens were produced changing mould temperature and injection pressure on two levels: (500, 550) °C and (20,30) bar.

Specimens' analysis

The analysis was performed on longitudinal sections of every specimen after cutting by a Minitom Struers cut-off machine (125 mm in diameter and 0,5 mm thick wheel, with bakelite bonded SiC abrasive). Images of these sections were acquired in order to perform image analysis of voids. To this end the surfaces were painted using a black dye in order to obtain good contrast. The specimens were ground with a series of SiC papers and afterwards polished with 1 µm alumina.

Then they were acquired by an Image Sensor Type CCD with 5.04 Megapixel resolution and f\2.8 Carl Zeiss optic lens. The image of each specimen was calibrated to avoid aberrations and positioning errors [19]. It was enhanced by means of contrast equalization and bright correction. A median filter was applied in order to avoid random error and impulse noise. A binarisation separated features (cell cavities) from background.

The segmentation was performed by using a semiautomatic watershed method [14] developed to highlight each cavity and each cell contributing to cavity formation. Indeed some process problems can produce larger cavities by cell intersection, as shown in the grey and black areas of highlighted detail of Fig. 3a. The semiautomatic watershed method allows to isolate these cells by using seeds positioned at the intersections of the segments that define the binary image skeleton (Fig. 3b). From these seeds a segmentation of the cells that contribute to each cavity is found (Fig. 3c).

Shape indicators considered in this study are circularity, rectangularity and elongation. Circularity is a ratio of the perimeter of a circle with the same area as the particle divided by the perimeter of the actual particle image. Rectangularity is measured by the ratio of the area of the region to the area of its minimum bounding box. Elongation is defined as the aspect ratio of the minimal bounding box, i.e. the ratio of the longest and the shortest sides.

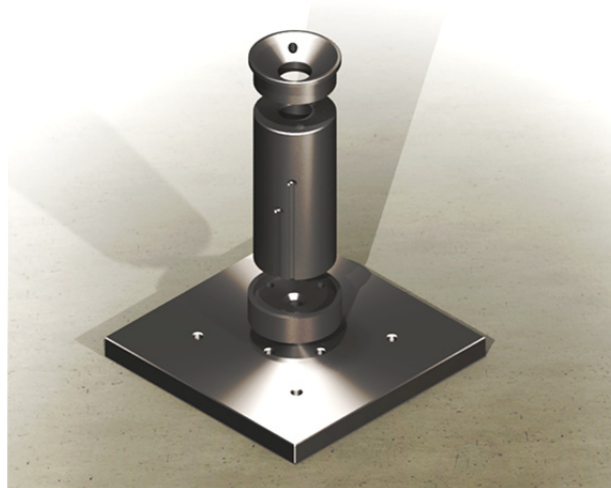


Figure 1: Mould used for foam production.

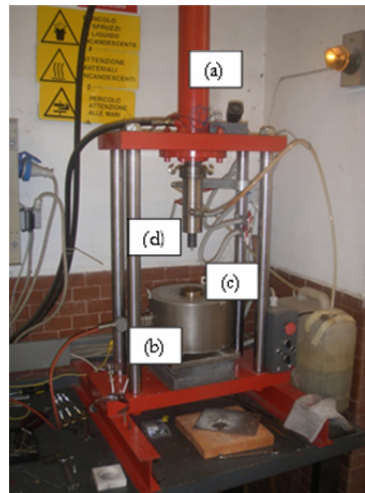


Figure 2: Experimental apparatus: (a) hydraulic cylinder, (b) hollow oven, (c) mould, (d) piston.

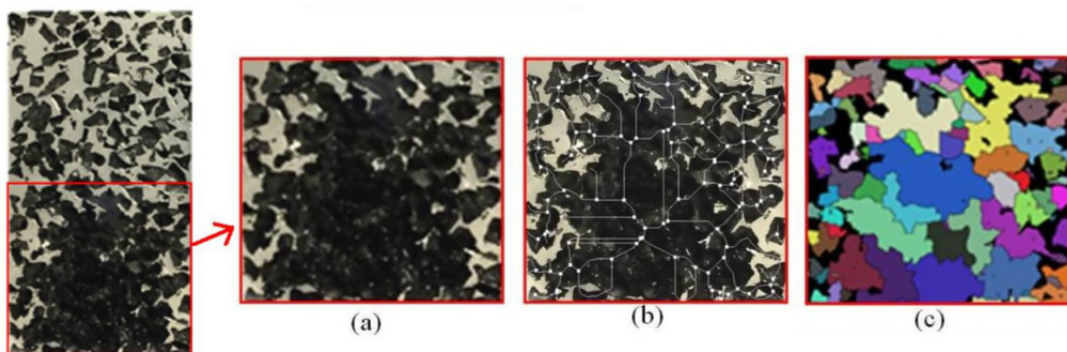


Figure 3: Semiautomatic watershed method to isolate cell contributing to cavity formation. (a) large cavity detail; (b) seeds through image skeletonisation; (c) final cell segmentation.

RESULTS AND DISCUSSION

Table 1 shows the global characteristics of the specimens in terms of weight, density, height according to process parameters. It can be observed that the mean density value is $1.045 \pm 0.110 \text{ g/cm}^3$. A close observation of the specimens reveals that 4 of them are characterised by a discontinuous external wall. This is related to the mould preheating temperature that affects cooling rates and that can determine a premature solidification of the foam external layer. This assumption is confirmed by the fact that four of the six specimens obtained by preheating the mould at 500°C have this defect (Fig. 4).

Specimen	T [$^\circ\text{C}$]	P [bar]	weight [g]	height [mm]	density [g/cm^3]
#1	500	20	30.2	52.84	0.928
#2	500	20	32.9	49.21	1.086
#3	500	20	32.4	56.18	0.937
#4	500	30	28.8	49.97	0.936
#5	500	30	30.7	45.26	1.102
#6	500	30	24.9	44.44	0.910
#7	550	20	33.5	48.80	1.115
#8	550	20	31.8	52.00	0.993
#9	550	20	34.1	47.24	1.172
#10	550	30	34.7	47.45	1.188
#11	550	30	33.2	44.92	1.200
#12	550	30	27.1	45.25	0.973

Table 1: Global characteristics of the specimens.

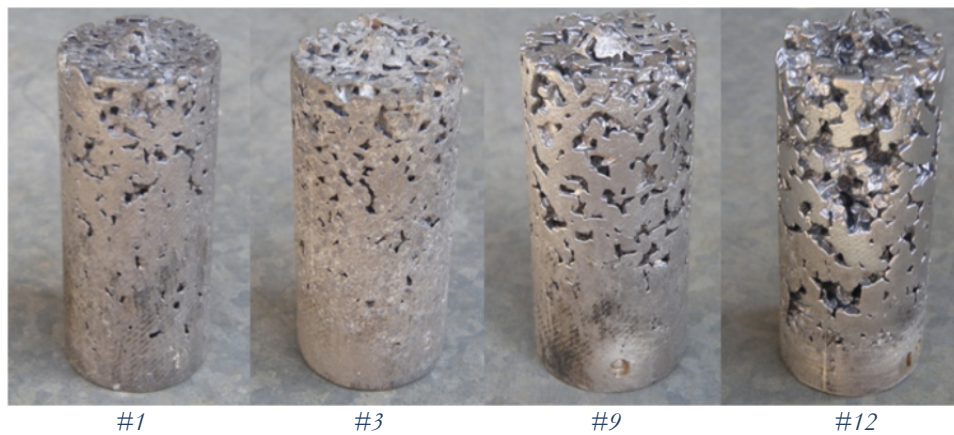


Figure 4: Macrographs showing the external appearance of specimens characterised by a discontinuous external layer.

Fig. 5 shows foam density as a function of temperature and pressure. Foam density decreases by decreasing mould temperature. In fact a mould temperature decrease raises cooling rates with consequent quick solidification of the alloy occurring probably before the mould is completely filled. This phenomenon explains also the reason why specimens #1, #3, #9, #12 have a discontinuous external layer. As far as the pressure is concerned Fig. 5 shows that it does not affect specimen density at the lower considered mould temperature while at higher temperature its increase raises density. This can be explained considering that at 550°C solidification is slightly delayed and then an higher applied pressure enhances metal infiltration through the salt pattern.

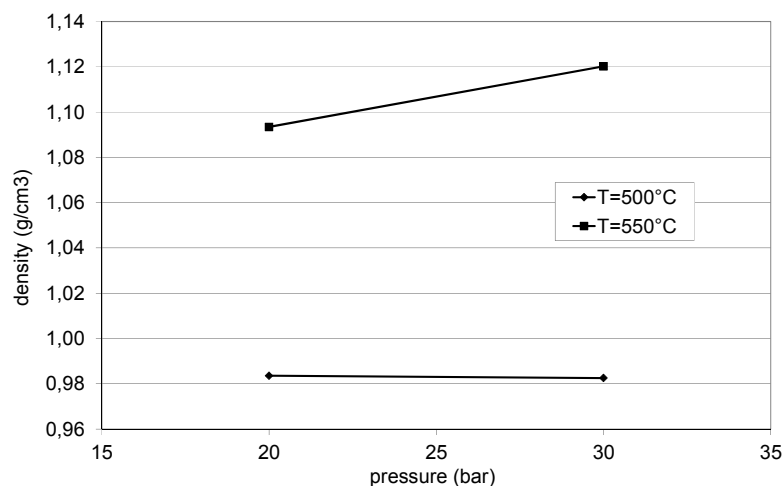


Figure 5: Foam density according to temperature and pressure variations on two levels.

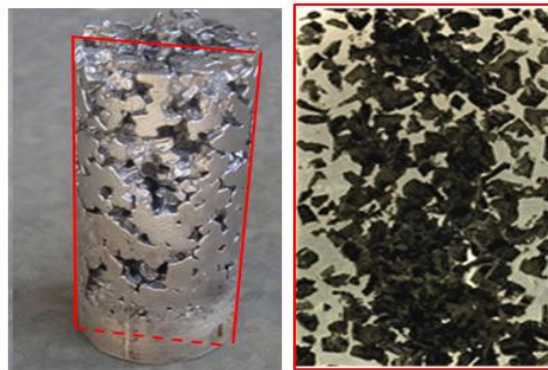
In order to find the relationship between manufacturing process parameters and foam morphology image analysis has been used to study specimen longitudinal sections. Void distribution and averaged density as well as void circularity, elongation and rectangularity have been analysed and their mean values have been reported in Tab. 2. Specimen #12 has been evaluated as an outlier sample since its external wall is strongly discontinuous and its section is affected by anomalous cavities probably due to inefficient infiltration through the salt pattern (Fig. 6).

Standard deviation computed for each indicator demonstrates a good replicability of the process. Standard deviation of the averaged void density shows the highest value although it is still less than 0.1, falling in an acceptable range of process variability. Two factors can affect this variation: the local distribution of void density along the investigated section and the variation of the process parameters. Fig. 7 shows the averaged void density according to temperature and pressure variations. The results are consistent with the foam density graphs reported in Fig. 5. In fact when the temperature level increases the averaged void density decreases due to a higher foam density.

Pressure effects seem to be slightly different from the results achieved in Fig. 5 probably due to a major role played by the local distribution of voids on the sections. In Fig. 8 the normalized occurrence histograms of the local distribution of foam density (FD, defined as $FD=1-VD$ where VD stands for void density) are shown. They have been computed through a mean of the distribution values associated to a pre-assigned grid. This kind of analysis highlights that sections with large localised cavities have frequency histograms like that one of specimen #4 while the others show Gaussian behaviour like specimen #8.

Specimen	averaged void density	circularity	elongation	rectangularity
#1	0.676	0.612	0.437	0.483
#2	0.581	0.600	0.434	0.459
#3	0.666	0.602	0.415	0.489
#4	0.661	0.603	0.443	0.462
#5	0.589	0.584	0.423	0.481
#6	0.667	0.608	0.451	0.488
#7	0.645	0.585	0.414	0.479
#8	0.563	0.599	0.443	0.469
#9	0.515	0.577	0.416	0.480
#10	0.568	0.560	0.411	0.475
#11	0.535	0.570	0.442	0.474
#12	0.738	-	-	-
<i>mean</i>	0.617	0.591	0.430	0.476
<i>std. dev.</i>	0.068	0.017	0.014	0.010

Table 2: Morphological indicators of the investigated sections (mean values).



Specimen #12

Figure 6: Section of specimen #12

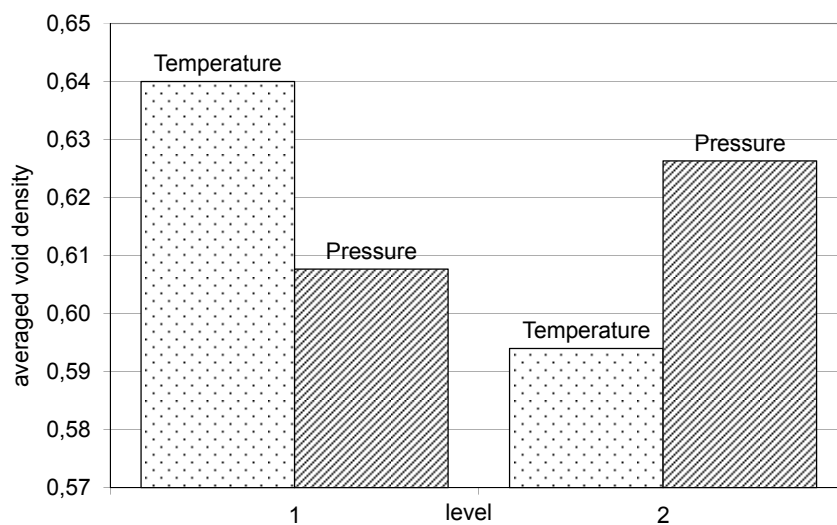


Figure 7: Main effects of temperature and pressure on the averaged void density.

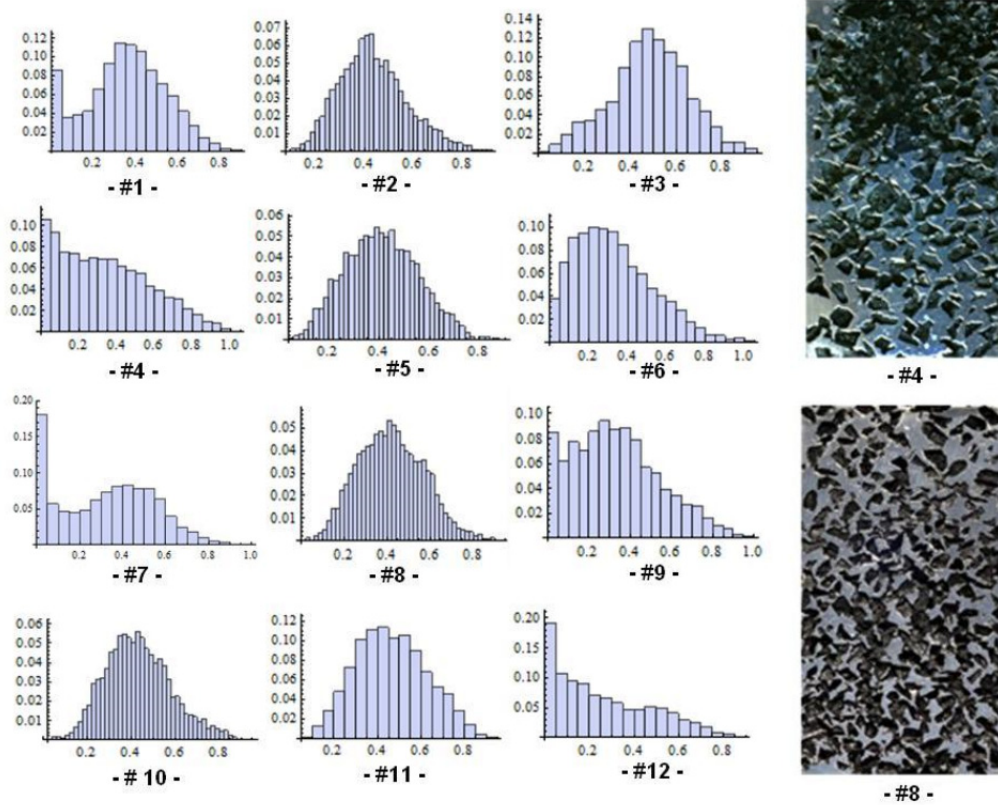


Figure 8: Local distribution of FD: normalized occurrence histograms and the most irregular and regular section (#4 and #8).

According to the DOE conditions sections which are related to specimens obtained by using a mould preheated at 550°C, exhibit more regular frequencies and, among them, that ones infiltrated at 30 bar, are the most regular ones. This confirms the assumption that higher pressure coupled with higher temperature optimises metal infiltration. The role of temperature and pressure to improve the infiltration is confirmed also by the circularity. As reported in Tab. 2 it can be highlighted that void circularity increases by decreasing both the applied pressure and the preheating temperature of the mould (Fig. 9): this is because in these conditions the liquid metal infiltrates less effectively the salt bed and therefore the salt particles are not well replicated and cavities tend to become more rounded (generally speaking circularity of 0.666 represents rectangular shapes with aspect ratio of 1:4).

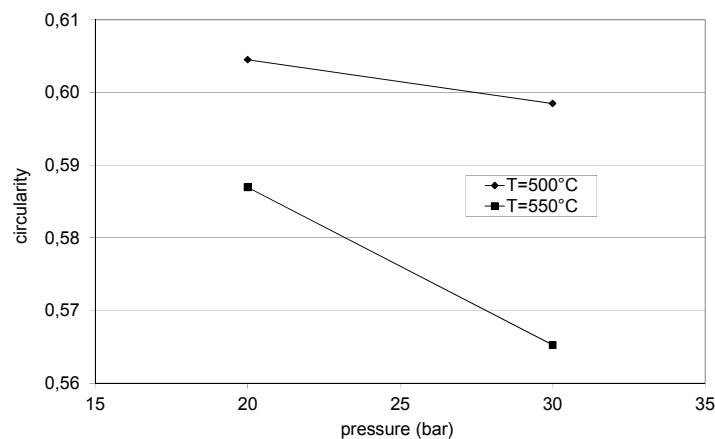


Figure 9: Circularity according to temperature and pressure variations on two levels.

As far as rectangularity values are concerned they remain almost constant in all the tested operative conditions. Elongation values also seem to be insensitive to changes of process parameter values. Voids are slightly more elongated only when metallic foam is produced by applying 30 bar pressure and by preheating the mould at 500 °C. This is probably due to the fact that in these operative conditions there is a considerable chill from the mould face and thus the alloy that is characterised by a poor fluidity and that is pushed by the piston through the salt bed produces more elongated cavities. The small sensitivity of these indicators to process parameters can be probably due to a more relevant effect of the topological shape of the salt pattern adopted during the manufacturing process.

A further aspect that needs to be analysed is the effect of process parameters on the alloy microstructure. The microstructure of the alloy is typical of a hypoeutectic Al-Si alloy, with primary α -Al dendrites and eutectic Si particles distributed around the Al dendrites to form a cell pattern periodically repeated across the surface.

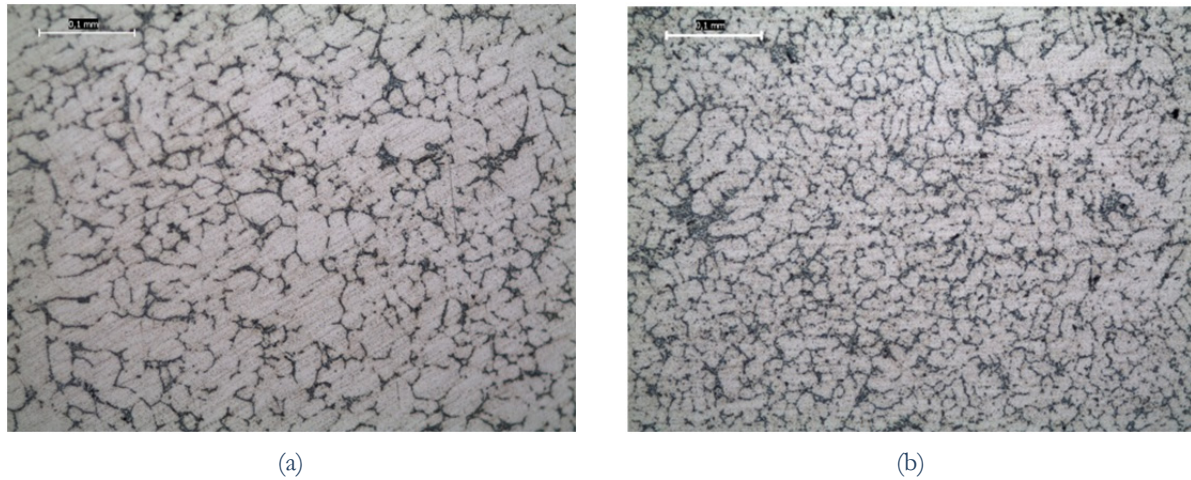


Figure 10: Optical micrographs showing the microstructure of specimen 1 (a) and specimen 7(b).

Microstructural analysis highlighted that the microstructure of alloys cast in different operative conditions are very similar to each other. The specimens showing a finer structure (Fig. 10) are only the ones produced by preheating the mould at 550 °C and by applying a pressure of 30 bar. In those conditions the melt infiltrates efficiently the salt pattern and there is a considerable chill from the salt surface that locally increases cooling rates. By analysing the foam microstructure it is also apparent that the most heterogeneous areas are the ones close to the voids where solidification conditions are far away from equilibrium. Those areas are richer of eutectic Si. As far as the eutectic Si particles is concerned the used manufacturing process, which is characterized by very high cooling rates, determines the formation of rounded and short lamellae that improve the mechanical properties of the alloy. A close examination of silicon and intermetallic phases, carried out on deep etched specimens, highlighted that both of them may have platelet and rod-like morphology (Fig. 11).

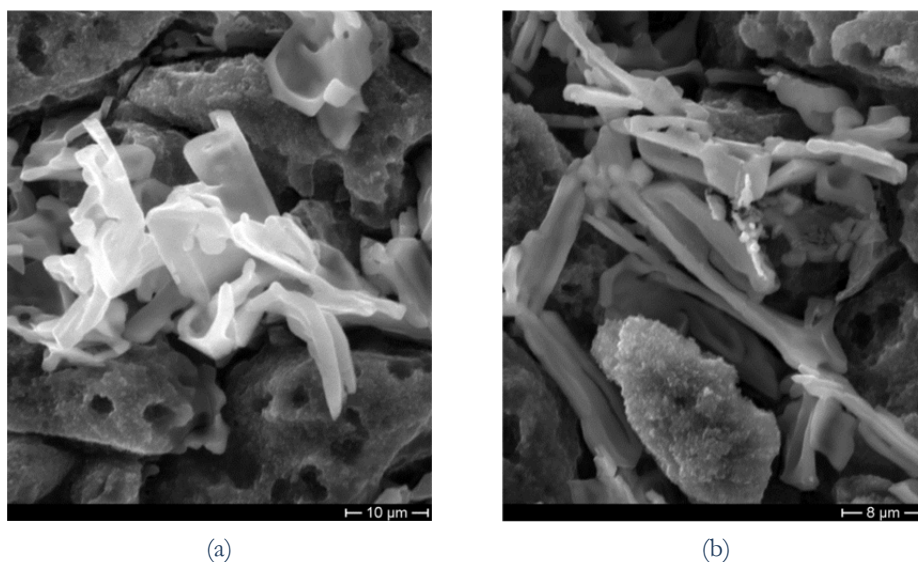


Figure 11: SEM micrographs showing the morphology of a silicon (a) and of an iron-rich intermetallic particle (b).

CONCLUSIONS

In this work replicated AlSi7Mg0.3 alloy foams are produced by infiltrating preforms of NaCl particles, varying the metal infiltration pressure and the mould temperature. An original procedure based on image analysis has been set up to determine size, morphology and distribution of cells. The results highlighted that when the mould is preheated at 500 °C there is an excessive chill and the liquid metal does not develop a smooth skin through intimate contact with



the mould surface. When the mould is preheated at 550 °C the void density decreases by increasing the applied pressure. Moreover an increased infiltration pressure enhances metal infiltration through the salt pattern. In these conditions the void density distribution is more regular and there is a more effective replication of salt particles with a consequent reduced void circularity. This confirms the assumption that higher infiltration pressure coupled with higher mould preheating temperature optimises metal infiltration. Finally, the proposed procedure used to analyse the foam sections appears an effective way to analyse the effect of process parameters on foam morphology.

REFERENCES

- [1] M.F. Ashby et al., In: *Metal Foams: A Design Guide*, Edited by Butterworth-Heinemann, USA (2000).
- [2] H.P. Degischer et al., *Material Definitions, Processing, and Recycling*, In: *Handbook of Cellular Metals: Production, Processing, Applications*, Edited by H.P. Degischer, and B. Kriszt, Austria (2003).
- [3] L. Polonsky, S. Lipson, H. Markus, *Modern Castings*, 39 (1961) 57.
- [4] S. Al-Jibbouri, J. Ulrich, *Crystal Research and Technology*, 36 (2001) 1365.
- [5] J.H. Adair, E. Suvaci, *Opinion in Colloid and Interface Science*, 5 (2000) 160.
- [6] C. Gaillard, J.F. Despois, A. Mortensen, *Materials Science and Engineering A*, 374 (2004) 250.
- [7] B. Jiang, N.Q. Zhao, C.S. Shi, J.J. Li, *Scripta Materialia*, 53 (2005) 781.
- [8] R. Goodall, A. Marmottant, L. Salvo, A. Mortensen, *Materials Science and Engineering A*, 465 (2007) 124.
- [9] R. Goodall, J.F. Despois, A. Marmottant, L. Salvo, A. Mortensen, *Scripta Materialia*, 54 (2006) 2069.
- [10] J.F. Despois, A. Marmottant, L. Salvo, A. Mortensen, *Materials Science and Engineering A*, 462 (2007) 68.
- [11] C. Kádár, F. Chmellík, M. Cieslar, J. Lendvai, *Scripta Materialia*, 59 (2008) 987.
- [12] F. Quadrini, A. Boschetto, L. Rovatti, L. Santo, *Materials Letters*, 65 (2011) 2558.
- [13] A. Boschetto, G. Costanza, F. Quadrini, M. E. Tata, *Materials Letters*, 61 (2007) 2969.
- [14] Boschetto, F. Campana, V. Giordano, D. Pilone, In: *Computational Modelling of Objects Represented in Images III: Fundamentals, Methods and Applications*, Edited by P. Di Giamberardino, D. Iacoviello, M. João, Italy (2012) 391.
- [15] J. Banhart. *Progress in Materials Science*, 46 (2001) 559.
- [16] J. Baumeister, U. J. Banhart, M. Weber, *Materials & Design*, 18 (1997) 217.
- [17] U. K. Vaidya, S. Pillay, S. Bartus, C.A. Ulven, D.T. Growc, B. Mathewc, *Materials Science and Engineering A*, 428 (2006) 59.
- [18] F. Campana, D. Pilone, *Materials Science and Engineering A*, 479 (2008) 58.
- [19] J.C. Russ, In: *The Image Processing Handbook*, 5th ed., Edited by CRC Press Taylor & Francis Group, USA (2006).